



HP Select Access software

Data sheet



HP Select Access software helps your organization improve user productivity and safeguard IT applications and infrastructure by providing policy-based authentication and authorization to web-based applications and web services.

Enable centralized access management

HP Select Access software provides centralized access management across web-enabled applications and web services with an easy-to-understand graphical view of identities and their access rights. Automating users' access to online resources with enhanced security features helps your enterprise meet your security controls and provides your users with a personalized experience, while protecting their privacy.

HP Select Access has been independently reviewed as the easiest-to-use and quickest-to-deploy identity management product on the market. HP Select Access provides a unified approach to defining authorization policies and safely managing role-based access to online resources, greatly reducing administration costs and complexity. It enables your business to capitalize on the potential of extranets, intranets and portals by providing web-based single sign-on for a seamless user experience.

Key features and benefits

- An intuitive user interface allows you to change user access rights to IT resources with as little as one click.
- Centralized policy management with delegated administration across both web-enabled applications and web services reduces development and user administration costs.
- Policy-based business rules and transaction-level authorization for web services help your company align its processes.
- Single sign-on and user self-service tools provide a positive end-user experience and reduce user support costs.

HP Select Access supports multiple authentication types, including user self-registration and passwords.

Keep pace with change

In businesses large and small the only constant is change, especially in the user population and their access to applications. New employees can wait weeks before they are configured with all the necessary access rights to the applications they need to perform their jobs, resulting in lost productivity and revenue opportunities.

Existing users' access rights also change over time. For example, new and different types of access are required as users become increasingly mobile. To address this, you must constantly upgrade remote access technologies (VPNs, RADIUS, portals, Microsoft® Outlook Web Access, etc.).

While addressing these challenges, your business is under competitive pressure to extend information access to external users, including your customers, partners and suppliers. Your IT department, consumed by the demands of internal users and organizations, may already be struggling to supply access for your customers and partners.

This situation is made even more complex as government regulations around the world demand greater protection and accountability for access to critical information. This places a legal responsibility on your company to attest to the integrity, privacy and security of your business data and information systems.

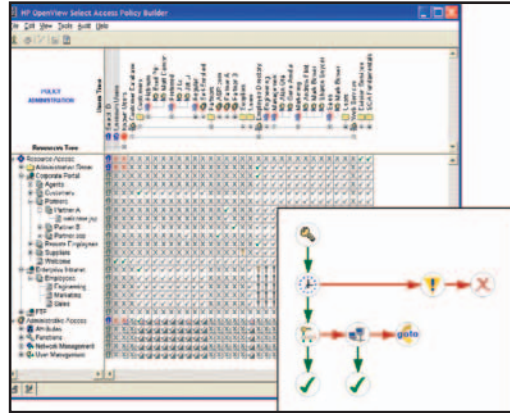
Identity management is widely recognized as an essential IT tool to help automate the many IT updates required as users move around a company. This automation can bring rapid returns by reducing provisioning costs. However, your organization also faces IT and business-related changes that can have significant management and cost implications for the identity management process itself.

For example, change events—such as introducing new products and services to market, acquiring, merging or reorganizing enterprises, updating IT systems, enrolling new customers and partners, and verifying compliance with evolving regulations—are necessary elements of doing business. Today's high rate of change results in time-consuming and complicated processes that, in many cases, are handled by a number of different departments or lines of business.

With typical identity management solutions, these duplicated and independent processes can still result in delayed access to required resources and increased expenses to update the identity management configuration.

Figure 1. Policy Matrix

The HP Select Access Policy Matrix provides a clear view of all users and resources. The intuitive drag-and-drop rule builder lets you configure sophisticated conditional policy rules with ease.



Meet your challenges with HP Select Access software

Adaptable user access and authorization rights

HP Select Access provides centralized authorization management across web-enabled applications and web services with an easy-to-understand view of identities and their access rights. Automating users' access to online resources with enhanced security features helps your enterprise meet its security controls and provides users with a personalized experience, while protecting their privacy.

At the center of HP Select Access is an award-winning, intuitive user interface and XML-based architecture. HP Select Access has been independently reviewed as the easiest-to-use and quickest-to-deploy identity management product on the market. HP Select Access provides a unified approach to defining authorization policies and managing role-based access to online resources with enhanced security, greatly reducing administration costs and complexity. It enables businesses to capitalize on the potential of extranets, intranets and portals by providing web-based single sign-on for a seamless user experience.

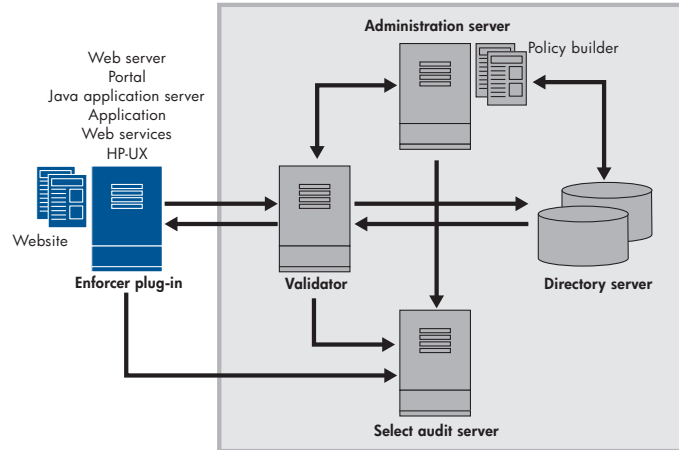
Easy installation and deployment

HP Select Access can be installed, configured and protecting resources in your environment in as little as one hour. HP Select Access supports a broad range of platforms and works with the leading web services platforms, web and application servers, portals and directories out of the box. Aside from the current environments supported, HP Select Access features customizable application programming interfaces (API) to work within your existing web and non-web environments. This means it can be quickly deployed in a heterogeneous IT environment. It also provides a single point to manage authorization for both wired and wireless users across extranet and intranet applications.

Additionally, HP Select Access supports multiple authentication types, including user self-registration and passwords, Windows NT®, Kerberos, Radius-based authentication servers, SecurID, tokens and X.509 certificates. It includes a rich set of native password and profile management capabilities, allowing your IT managers and end users to effectively manage their passwords and self-manage their user profiles.

Figure 2. Architecture

To enable high availability and scalability to millions of users, the Select Access architecture supports replication at any level, automatic load balancing, and failover across multiple servers.



Performance-based scalability

HP Select Access is designed to keep pace with a growing number of applications and users, as well as spikes in user activity, enabling high availability and performance. To accommodate simultaneous access attempts by millions of users, all levels of the HP Select Access architecture can be replicated, with automatic load balancing and failover across multiple servers. This allows the service to scale to any load level, creating a fully redundant system that provides high availability and supports mission-critical implementations.

Flexible delegated administration

HP Select Access allows definition of central security policies that are enforced across all users and applications, while delegating user administration. Administration of some or all of the user profiles, policies, audit and HP Select Access functions can be delegated to additional administrators—with optional control to sub-delegate. Delegated administrators see only those portions of the Policy Matrix that they have permission to manage—everything else is hidden. HP Select Access also includes fully customizable web-based administration, which provides the ability to include delegated user management as part of the corporate portal.

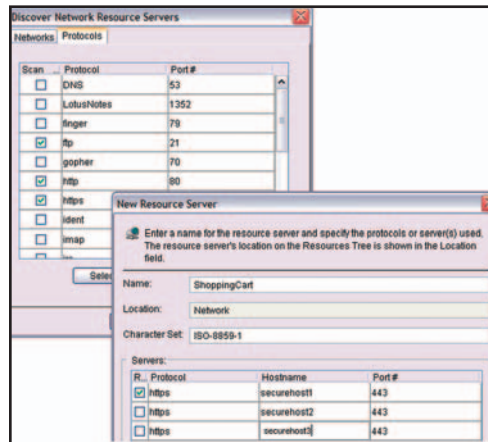
User management can be delegated down to the level of the user's attributes themselves, allowing complete view, modify or hidden control per administrator. Delegation of function supports full separation of duty, keeping managers of users and entitlements distinct from those who can report on administrative audit. This allows the configuration of the system to be set based on actual job function within your enterprise. HP Select Access displays and determines the administrator's authority to administer privileges in the same manner as it does for resource access privileges.

Workflow

HP Select Access provides the ability to enable strong change control for any administrative action. If help desk administrators need approval to change a user's group, for example, the workflow system will notify the approvers necessary for the change. Approvers authenticate themselves to a web-based interface, which describes the change details and provides the ability to accept, reject and comment on the action. Granular workflow requiring, for example, five of ten approvers to accept the change, then secondary approvals from management, can be easily defined through the same drag and drop interface used for policy rules.

Figure 3. Discovery

Select Access simplifies configuration by auto-discovering servers and resources on the network that can be protected via access policies.



Fine-grained access control and dynamic access environments

HP Select Access enables fine-grained object-level access control and provides support for multiple kinds of control, including:

- Creating restrictions around specific “buttons” within a page that control certain functions for specific known and unknown users/identities, groups and roles
- Control authorization for specific OS commands and utilities on HP-UX servers
- Control authorization for specific row, column pairs in a database
- EJB method calls
- Query string-based URL control

HP Select Access supports dynamic access decision criteria, meaning the capability to render more complex decisions based on real-time data or application knowledge. Decision points available out of the box include:

- Networks and Domains evaluates identity’s network and domains
- Time-of-Day/Day-of-Week evaluates when the access request is occurring
- Encryption Level evaluates the encryption level
- Directory Attributes evaluates the identity’s user, group and/or role attributes
- Port evaluates the port the identity is attempting to access
- Database queries enable access control decisions

Access alerts

Organizations can create custom alerts (e.g., failed log-ins, attempts to access a restricted resource, successful log-ins) based on decision points in a conditional rule. This enables organizations to gain further insight into system operations and maintain the system integrity. The alerting function is fully customizable to all recorded audit events (e.g., administrator operations, system configuration and authentication).

Complete web-based single sign-on

Single sign-on across web-based applications and web services eliminates the need for users to be continuously authenticated. Having to supply the credentials only once is a critical ease-of-use feature, particularly in business environments where productivity depends on fast and efficient, yet security-enhanced, access to corporate assets.

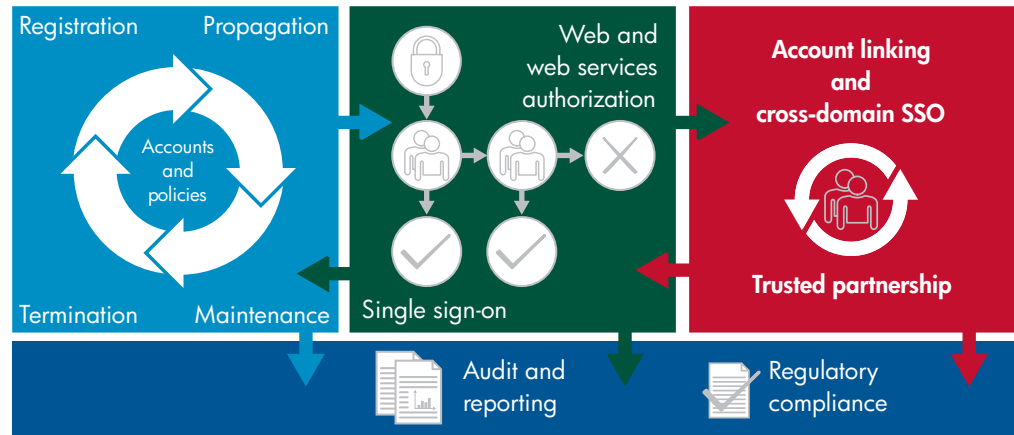
User self-registration and self-service management

HP Select Access provides the ability for users to enroll themselves, and automatically be assigned entitlements based on the information they submit. Registration pages are fully customizable, which allows companies to collect the user data they need to further their targeted marketing campaigns. It also provides administrators with the ability to delegate user management down to the users themselves.

By specifying which attributes in a user’s profile can be self-managed, administrators can allow their users to update their contact information, sign-up for additional services and provide additional user preferences. Fully customizable, web-based forms are provided to enable users to make changes to their profiles and accounts.

Figure 4. HP Identity Center

HP Identity Center provides a complete identity management solution, including provisioning, access management, federation and audit capabilities.



Audit, reporting and compliance

HP Select Access includes a basic license of HP Select Audit software that allows customers to manage the audit lifecycle, with built-in reporting on audit and compliance regulations. HP Select Audit includes a visual dashboard that provides an ongoing view of the enterprise's adherence to regulatory standards. HP Select Audit collects identity-based audit information in a tamper-aware store, provides alert handling, workflow-based attestation of reports and a customizable report GUI, to provide insight into identity and security controls.

HP Identity Center

HP Select Access is part of HP Identity Center, an integrated suite of products that helps automate and optimize the management of people, processes, security and compliance. Identity Center enables businesses to improve efficiency, productivity, security and compliance by automating the management of user identities and access to IT services and resources. HP Identity Center includes the following products:

HP Select Identity software

HP Select Identity software enables centralized management of users and their entitlements. Implemented with a business service approach, HP Select Identity automates the complete process of registration, approvals, user provisioning, ongoing account maintenance and termination. Managing the entire identity lifecycle helps your enterprise achieve its compliance objectives, while empowering its business users with workflow-based delegation and self-service.

HP Select Access

HP Select Access provides centralized authorization management across web-enabled applications and web services. Based on an award-winning, intuitive user interface, HP Select Access provides an easy-to-understand view of identities and their access rights. Automating users' access to online resources with enhanced security features helps your enterprise meet your controls and provides your users with a personalized single sign-on experience, while protecting their privacy.

HP Select Federation software

HP Select Federation software enables the sharing and management of user identities across business boundaries. Linking identity accounts using industry standards, HP Select Federation reduces administrative cost and time, while enabling trusted business relationships. Industry-leading opt-in user control provides unique privacy management capabilities to help meet your personal, corporate and regulatory privacy requirements.

HP Select Audit software

HP Select Audit software reports on processes across the entire identity infrastructure. Using a visual control model, HP Select Audit provides an auditor's perspective on adherence to regulatory requirements. It aggregates identity audit information in a tamper-aware store, with real-time alert handling and workflow-based attestation of reports, to provide insight into identity and security controls and how they align with the desired state of the business.

Technical specifications

Supported platforms, servers and applications

Platforms are subject to change—contact your HP representative for the latest information about specific versions and platforms supported.

Operating system support	<ul style="list-style-type: none">• Microsoft® Windows®• HP-UX, HP-UX Itanium®• Sun Solaris• Red Hat Linux AS, AS Itanium
Directory servers	<ul style="list-style-type: none">• Microsoft Active Directory• Microsoft ADAM• Sun Java™ System Directory• iPlanet Directory Server• Netscape Directory Server• Novell eDirectory• Critical Path Directory• Oracle® Internet Directory• CA eTrust Directory• OpenLDAP
Application and portal servers	<ul style="list-style-type: none">• BEA WebLogic Application Server• IBM WebSphere Application Server• Tomcat Application Server• SAP WebAS• Oracle 9i Application and Portal Servers• Any J2EE compliant server
Web servers	<ul style="list-style-type: none">• Microsoft IIS• Sun/iPlanet/Netscape Web Servers• Apache Web Server• IBM HTTP Server
Authentication methods	<ul style="list-style-type: none">• Passwords• Windows NT Domains• Windows Kerberos• Digital Certificates• RSA SecurID• Smart cards• Two-factor tokens• RADIUS authentication• Custom methods
Web-enabled applications	<ul style="list-style-type: none">• HP SOA Manager• HP Select Identity• HP Select Audit• Outlook Web Access• SharePoint• Apache Reverse Proxy
Enterprise single sign-on	<ul style="list-style-type: none">• Citrix Password Manager
Management and configuration	<ul style="list-style-type: none">• HP Operations• HP Service Desk
API extensibility	<ul style="list-style-type: none">• Secure new and custom applications• Add authentication methods• Customize policy and business logic• Add policy GUI components• Extend resource discovery capabilities• Add or extend administration functions

A complete solution

Comprehensive training

HP provides a comprehensive curriculum of HP Software and IT Service Management courses. These offerings provide the training you need to realize the full potential of your HP solutions, increase your network optimization and responsiveness, and achieve better return on your IT investments.

With more than 30 years experience meeting complex education challenges worldwide, HP knows training. This experience, coupled with unique insights into HP Software products, positions HP to deliver a better training experience. For more information about these and other educational courses, visit:

www.hp.com/learn

The smartest way to invest in IT

HP Financial Services provides innovative financing and financial asset management programs to help you cost-effectively acquire, manage and ultimately retire your HP solutions. For more information on these services, contact your HP sales representative or visit:

www.hp.com/go/hpfinancialservices

Ordering information

For more information on HP Identity Center and our full line of identity management products, please visit www.hp.com/go/identity, or contact your local HP reseller or HP sales office.

To find an HP reseller or sales office near you, visit:

www.managementsoftware.hp.com/buy

HP Services

Get the most from your software investment

HP provides high-quality software services that address all aspects of your software application lifecycle needs. With HP, you have access to standards-based, modular, multi-platform software coupled with global services and support. The wide range of HP service offerings—from online self-solve support to proactive mission-critical services—enables you to choose the services that best match your business needs.

For an overview of HP software services, visit:

www.managementsoftware.hp.com/service



© Copyright 2005-2007 Hewlett-Packard Development Company, L.P. The information contained herein is subject to change without notice. The only warranties for HP products and services are set forth in the express warranty statements accompanying such products and services. Nothing herein should be construed as constituting an additional warranty. HP shall not be liable for technical or editorial errors or omissions contained herein. Java is a U.S. trademark of Sun Microsystems, Inc. Linux is a registered U.S. trademark of Linus Torvalds. Microsoft, Windows and Windows NT are U.S. registered trademarks of Microsoft Corporation. Oracle is a registered U.S. trademark of Oracle Corporation, Redwood City, California. Itanium is a trademark or registered trademark of Intel Corporation or its subsidiaries in the United States and other countries.

For more information visit: www.hp.com/go/identity

4AA0-2362ENW, Rev.3, May 2007

